



# Welcome to my weekly series! **ASK THE LANDSCAPE PROFESSIONAL**

Linda K. Lillie of Sprigs & Twigs

**SPRIGS & TWIGS HAS BEEN DESIGNATED AN ESSENTIAL BUSINESS AND WE ARE OPEN, IN ACCORDANCE WITH CT GOVERNOR NED LAMONT'S EXECUTIVE ORDER 7H, DATED MARCH 20, 2020.**

## \*QUESTION THIS WEEK:

Dear Linda – I have been trapped at home since the coronavirus and can't stand to see the state of my gardens anymore! Can you help bring back some beauty to my yard? Can you help me design a garden? - Anne

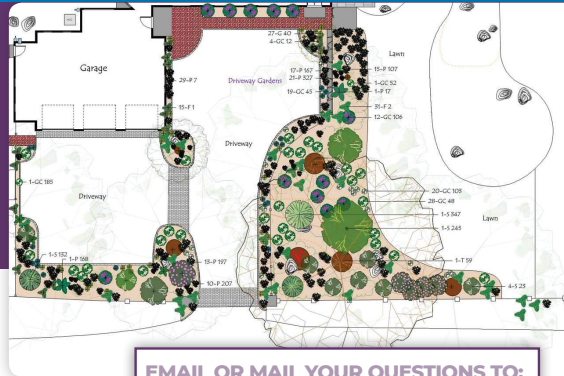
Hello Anne, Now is a great time to begin the process to design and install a garden, large or small.

The first step is to call me and I will set up a visit with you to go over your thoughts, preferences and space(s) involved for the project.

If you aren't certain what you are looking for, that's not a problem; I can help guide you. We then make detailed site drawings and I develop the planting design. Plant choices that I recommend are based on 30+ years of experience in what works in this area and what doesn't. I have tried everything I plant and guarantee all of our plantings for a year. I know plants and specialize in native, low-maintenance landscapes. Go to our website below for hundreds of pictures of our work. Our planting season has already started and runs until late October every year.

We install gardens based on the order contracts are signed, so if you are thinking about doing a project, now is the time to let us know. If you wait until later this spring or summer, that's not a problem, you will just be farther down the list. In addition to landscape services, Sprigs & Twigs offers high quality stonework and carpentry services. **See our portfolios at:**

[www.SprigsandTwigs.net](http://www.SprigsandTwigs.net)



EMAIL OR MAIL YOUR QUESTIONS TO:  
[info@sprigsandtwigs.net](mailto:info@sprigsandtwigs.net) or  
Linda Lillie, Sprigs & Twigs Inc,  
PO Box 245, Gales Ferry, CT 06335



SPRIGS & TWIGS VOTED THE BEST BY DAY READERS EVERY YEAR!

# Sprigs & Twigs

## THE GIFT THAT KEEPS YOU GROWING!

“Best of - Ask The Landscape Professional” Book

- Over 200 of your gardening questions answered.
- Organized in an easy to use 3 ring binder.
- An invaluable reference guide.
- A real treasure to give to that special gardener (or yourself)!
- \$39.95 + tax = \$42.48 + shipping and handling.

ORDER YOUR COPY TODAY! CALL OUR OFFICE AT:

**860-235-0752**

