

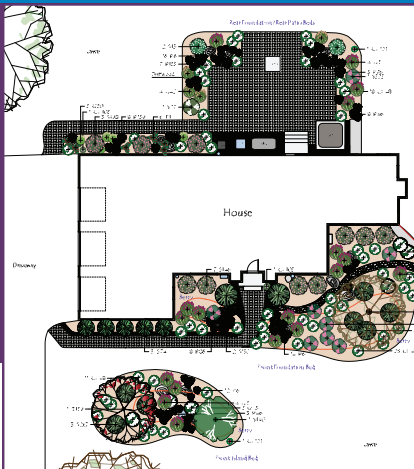


Welcome to my weekly series!  
**ASK THE LANDSCAPE PROFESSIONAL**

Linda K. Lillie of Sprigs & Twigs

**SPRIGS & TWIGS HAS BEEN DESIGNATED AN ESSENTIAL BUSINESS AND WE ARE OPEN, IN ACCORDANCE WITH CT GOVERNOR NED LAMONT'S EXECUTIVE ORDER 7H, DATED MARCH 20, 2020.**

Hi Linda, After spending this summer trying to keep up with the out-of-control plantings around my house, I need your help. My landscape was installed 15 years ago and for the first year or two it looked OK, but after that, I realized the plants and shrubs were planted way too close together and some too close to the house. Some of the shrubs are huge now and require constant pruning. My gardens don't look very good and I'm sick of them. I drive past a home down the street from me that you designed and installed some time ago and it's stunningly beautiful. I love your design style and the quality of your work. I know it's getting late in the year and maybe I should wait until next spring to have you design a garden for me, but I wanted to get in touch now. Thank you very much. Tory



Hello Tory- Your timing is perfect. Now is a great time to design your 2021 garden. My design team and I work year-round and we are now actively working on a number of design projects for 2021. We install gardens based on the order contracts are signed, so if you are thinking about doing a 2021 project, now is the time to let us know. If you wait until next spring, that's not a problem, but you will just be farther down the list.

Our designs feature low maintenance, naturalistic gardens with plants properly chosen for the environment they are in and their size at maturity. As the plants grow, you won't need to constantly prune them to keep them under control like you do now. See our website [www.sprigsandtwigs.net](http://www.sprigsandtwigs.net) for hundreds of pictures of our work.

The first step is to call the office 860-235-0752 or email me at [info@sprigsandtwigs.net](mailto:info@sprigsandtwigs.net) and I will set up a visit with you to go over your thoughts, preferences and space(s) involved for the project. If you aren't certain what you are looking for, that's not a problem; I can help guide you. We then make detailed site drawings and I develop the planting design. Plant choices that I recommend are based on over 35 years of experience in what works in this area and what doesn't. I have tried everything I plant and guarantee all of our plantings for a year. Often times our landscape designs include our custom stonework and carpentry teams as well. See our stonework and carpentry portfolios at [www.SprigsandTwigs.net](http://www.SprigsandTwigs.net). We do stonework and carpentry year-round except when things are completely frozen.

Whether your project is hundreds of dollars or tens of thousands of dollars, we provide the same high-quality products and services and attention to detail. We look forward to working with you.



**Seasoned Firewood Delivery Available**  
 SPRIGS & TWIGS VOTED THE BEST BY DAY READERS EVERY YEAR!

EMAIL OR MAIL YOUR QUESTIONS TO:  
[info@sprigsandtwigs.net](mailto:info@sprigsandtwigs.net) or  
 Linda Lillie, Sprigs & Twigs Inc,  
 PO Box 245, Gales Ferry, CT 06335

**"Best of - Ask The Landscape Professional" Book**



**AVAILABLE NOW!**

- Over 200 of your gardening questions answered.
- \$39.95 + tax = \$42.48 + shipping and handling.

**ORDER YOUR COPY TODAY! CALL OUR OFFICE AT:**

**860-235-0752**